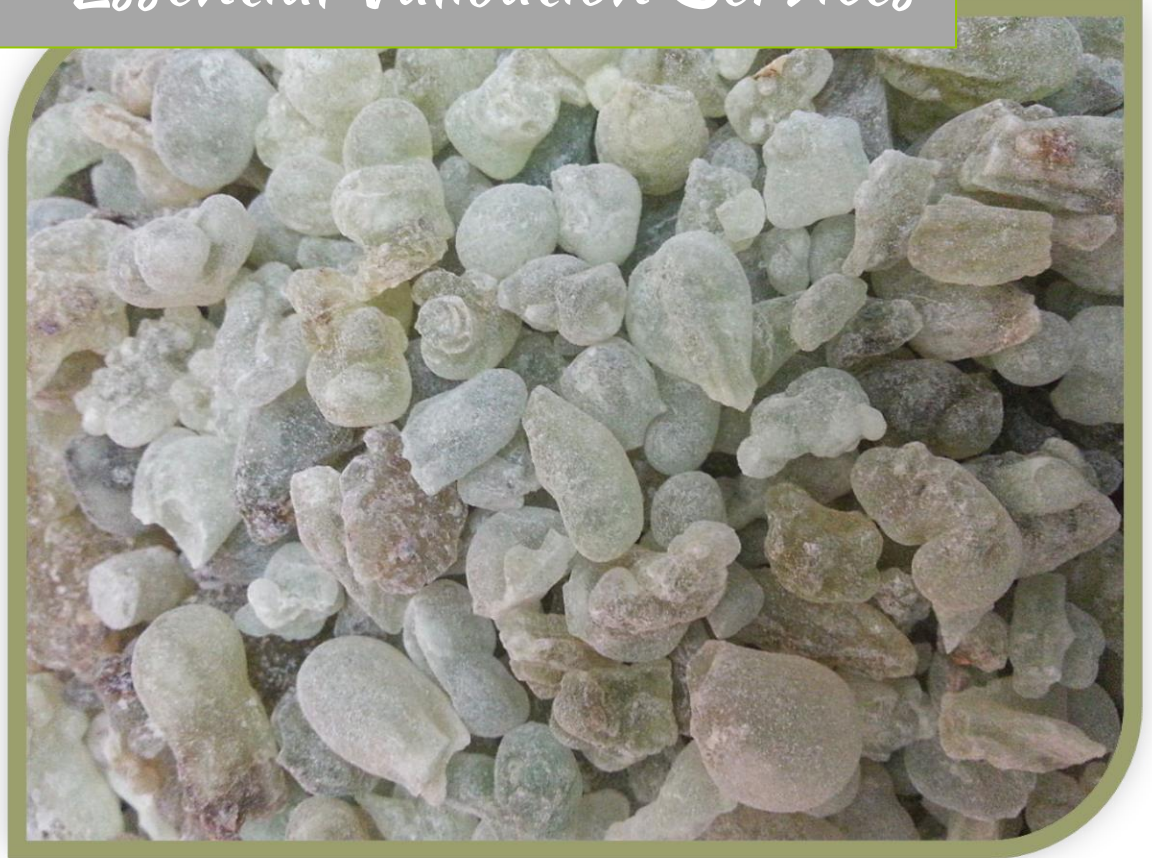




Essential Validation Services



Sample:

Client: | Floracopia
Sample: | Frankincense Serrata (*Boswellia serrata*)
Batch # | FRASB10318
CAS Number | 97952-72-2
Type: | Essential Oil

Conclusion:

- No adulterants, diluents, or contaminants were detected via this method.
- This oil meets the expected profile for genuine essential oil of Frankincense Serrata (*Boswellia serrata*).



X 

Validated By:

Essential Validation Services

747 SW 2nd Ave, Gainesville, FL 32601

Phone: 317-361-5044 E-mail: Adam@essentialvalidationservices.com

Summary of Analyses

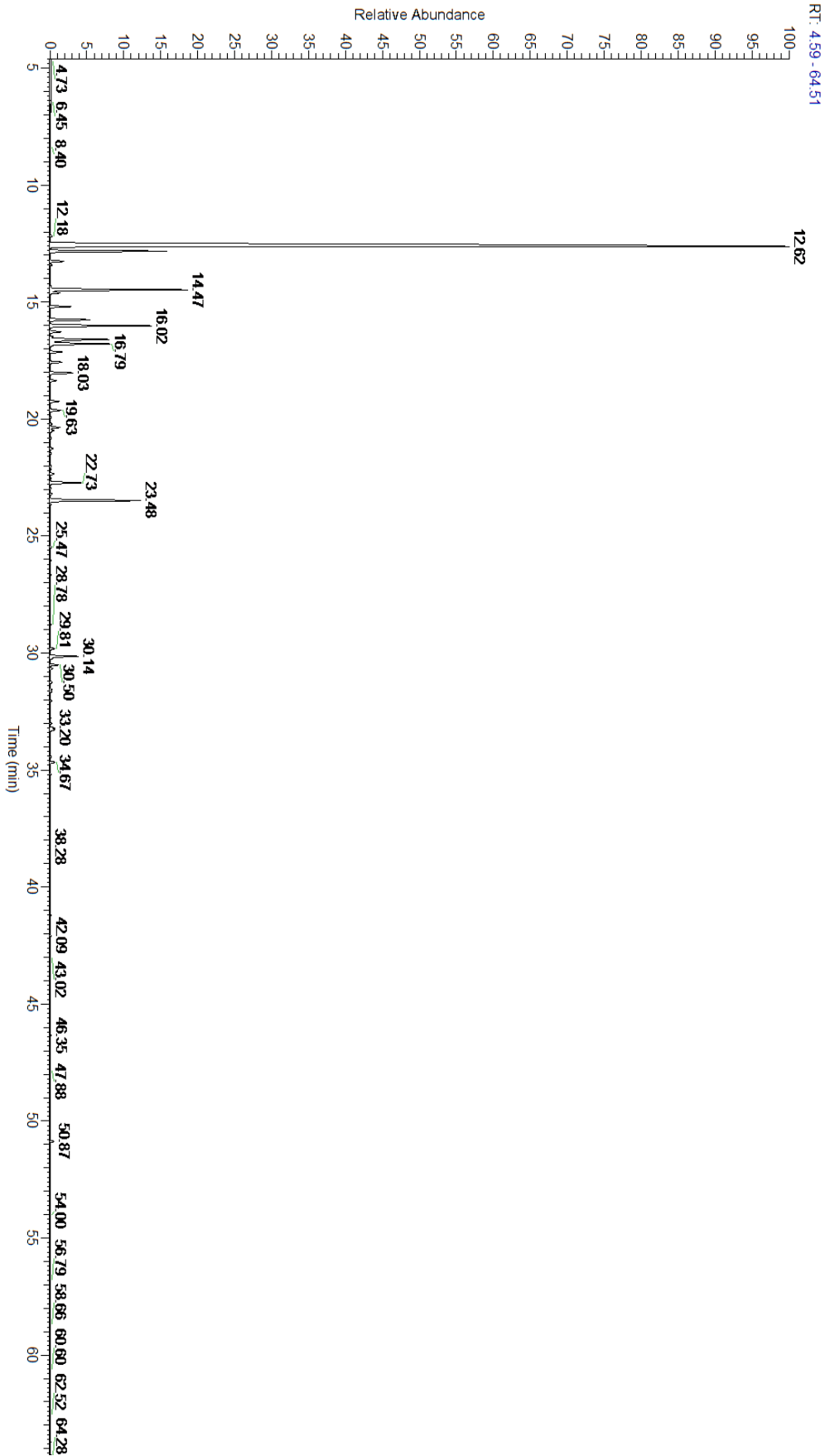
A fresh sample of Frankincense Serrata (*Boswellia serrata*) Essential Oil (10 uL in .5 to .5 mL Hexane + ETOH) was prepared and analyzed via split injection GC/EI-MS.

Main Compounds	Percentages
alpha-Thujene	56.72%
Sabinene	6.52%
delta-3-Carene	4.94%
alpha-Pinene	4.90%
Methyl chavicol	4.57%
Limonene	3.36%
1,8-Cineole	3.09%
alpha-Phellandrene	1.94%
Terpinen-4-ol	1.59%
beta-Bourbonene	1.42%
gamma-Terpinene	1.13%
Myrcene	0.94%
Thuja-2,4(10)-diene isomer	0.63%

Monoterpenes	Sesquiterpenes	Monoterpenols	Sesquiterpenols	Ketones
83.31%	2.58%	2.70%	0.01%	0.58%
Esters	Ethers	Aldehydes	Phenols	Other
0.04%	3.32%	0.00%	5.00%	2.46%



- Monoterpenes
- Sesquiterpenes
- Monoterpenols
- Sesquiterpenols
- Ketones
- Esters
- Ethers
- Phenols
- Other



Total Percentage		97.84%			
Peak Number	RT	Area %	Compound Name	RI	Chemical Family
1	12.18	0.09%	Hashishene	922.00	Monoterpene
2	12.62	56.72%	alpha-Thujene	927.80	Monoterpene
3	12.83	4.90%	alpha-Pinene	936.10	Monoterpene
4	13.26	0.63%	Thuja-2,4(10)-diene isomer		
5	13.42	0.09%	Camphene	950.30	Monoterpene
6	14.47	6.52%	Sabinene	973.00	Monoterpene
7	14.61	0.47%	beta-Pinene	974.00	Monoterpene
8	15.19	0.94%	Myrcene	989.20	Monoterpene
9	15.76	1.94%	alpha-Phellandrene	1002.00	Monoterpene
10	16.02	4.94%	delta-3-Carene	1008.00	Monoterpene
11	16.27	0.53%	alpha-Terpinene	1014.00	Monoterpene
12	16.49	0.11%	para-Cymene	1024.30	Monoterpene
13	16.60	3.36%	Limonene	1029.50	Monoterpene
14	16.79	3.09%	1,8-Cineole	1031.80	Monoterpene Ether
15	17.14	0.54%	(Z)-beta-Ocimene	1037.80	Monoterpene
16	17.57	0.53%	(E)-beta-Ocimene	1047.70	Monoterpene
17	18.03	1.13%	gamma-Terpinene	1054.00	Monoterpene
18	18.35	0.29%	trans-Sabinene hydrate	1072.00	Monoterpenol
19	19.25	0.45%	Terpinolene	1092.10	Monoterpene
20	19.63	0.57%	Linalool	1099.00	Monoterpenol
21	19.93	0.06%	alpha-Thujone	1106.00	Monoterpene Ketone
22	20.36	0.49%	beta-Thujone	1118.00	Monoterpene Ketone
23	20.80	0.05%	Alloocimene	1129.90	Monoterpene
24	21.26	0.13%	trans-Sabinol	1139.20	Monoterpenol
25	21.47	0.04%	trans-Verbenol	1149.00	Monoterpenol
26	22.14	0.03%	Pinocarvone	1161.43	Monoterpene Ketone
27	22.73	1.59%	Terpinen-4-ol	1180.57	Monoterpenol
28	23.20	0.08%	alpha-Terpineol	1191.71	Monoterpenol
29	23.48	4.57%	Methyl chavicol	1193.40	Phenylpropanoid
30	26.65	0.04%	Bornyl acetate	1288.29	Monoterpene Ester
31	28.78	0.06%	alpha-Cubebene	1355.71	Sesquiterpene
32	29.81	0.23%	alpha-Copaene	1379.00	Sesquiterpene
33	30.14	1.42%	beta-Bourbonene	1388.70	Sesquiterpene
34	30.50	0.37%	Methyl Eugenol	1407.27	Phenylpropanoid
35	30.67	0.12%	cis-alpha-Bergamotene	1411.50	Sesquiterpene
36	31.24	0.14%	beta-Caryophyllene	1427.14	Sesquiterpene
37	31.66	0.08%	trans-alpha-Bergamotene	1435.00	Sesquiterpene
38	32.36	0.01%	alpha-Humulene	1461.43	Sesquiterpene
39	33.20	0.24%	Germacrene D	1484.71	Sesquiterpene
40	33.28	0.19%	beta-Selinene	1487.57	Sesquiterpene
41	34.18	0.02%	gamma-Cadinene	1515.29	Sesquiterpene
42	34.42	0.07%	delta-Cadinene	1524.14	Sesquiterpene
43	34.67	0.23%	Kessane	1528.00	Sesquiterpene Ether



FLORACOPEIA

44	35.18	0.06%	Elemicin	1555.86	Phenylpropanoid
45	37.92	0.01%	T-Cadinol	1640.43	Sesquiterpenol
46	41.21	0.05%	Dimer of alpha-phellandrene I	1712.00	Diterpene
47	46.35	0.05%	Cembrene A	1931.00	Diterpene
48	50.87	0.20%	Incensole	2152.00	Diterpenol

ESSENTIAL VALIDATION SERVICES | 747 SW 2ND AVE GAINESVILLE, FLORIDA 32601 | 317-361-5044