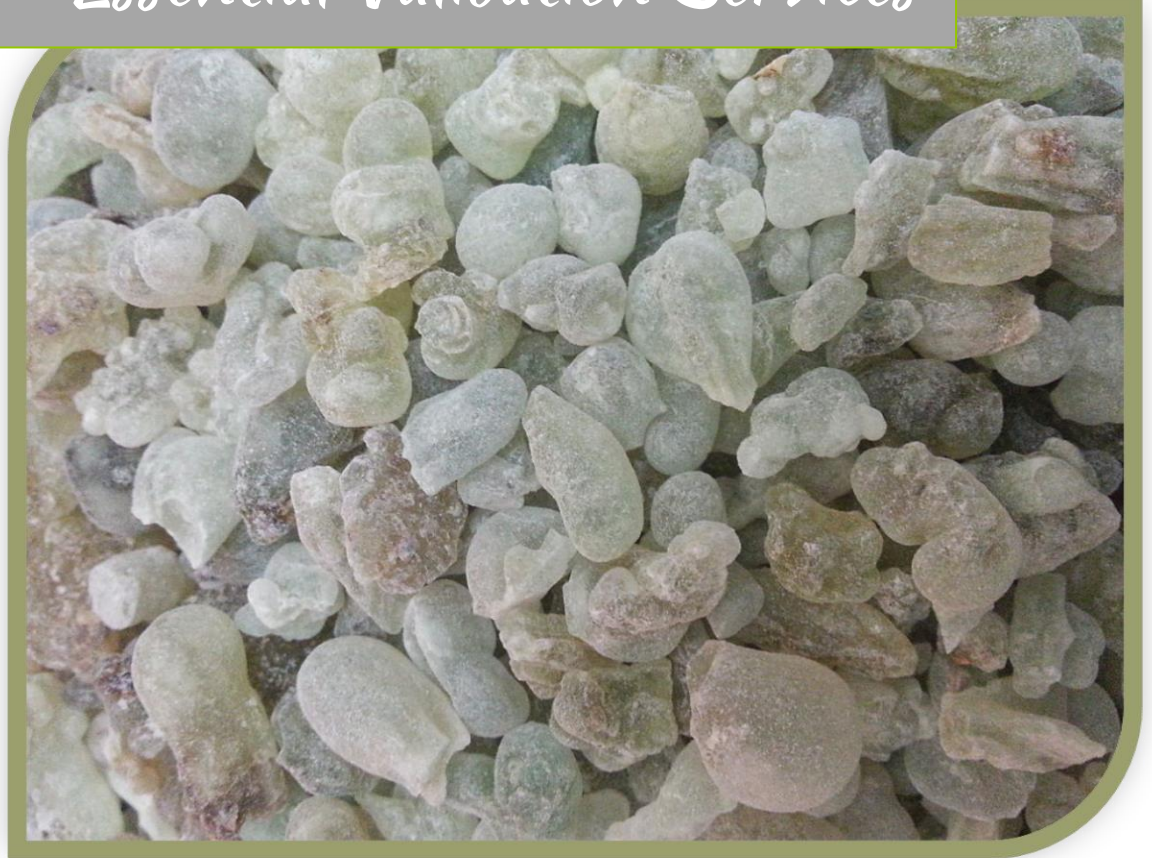




Essential Validation Services



Sample:

Client: | Floracopia
Sample: | Frankincense Papyifera (Boswellia papyifera)
Batch # | 60718
CAS Number | 89957-99-3
Type: | Essential Oil

Conclusion:

- No adulterants, diluents, or contaminants were detected via this method.
- This oil meets the expected profile for genuine essential oil of Frankincense Papyifera (Boswellia papyifera).



X 

Validated By:

Essential Validation Services

747 SW 2nd Ave, Gainesville, FL 32601

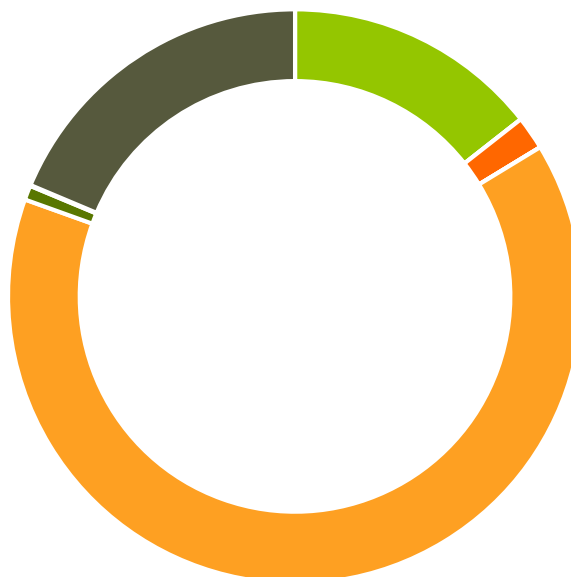
Phone: 317-361-5044 E-mail: Adam@essentialvalidationservices.com

Summary of Analyses

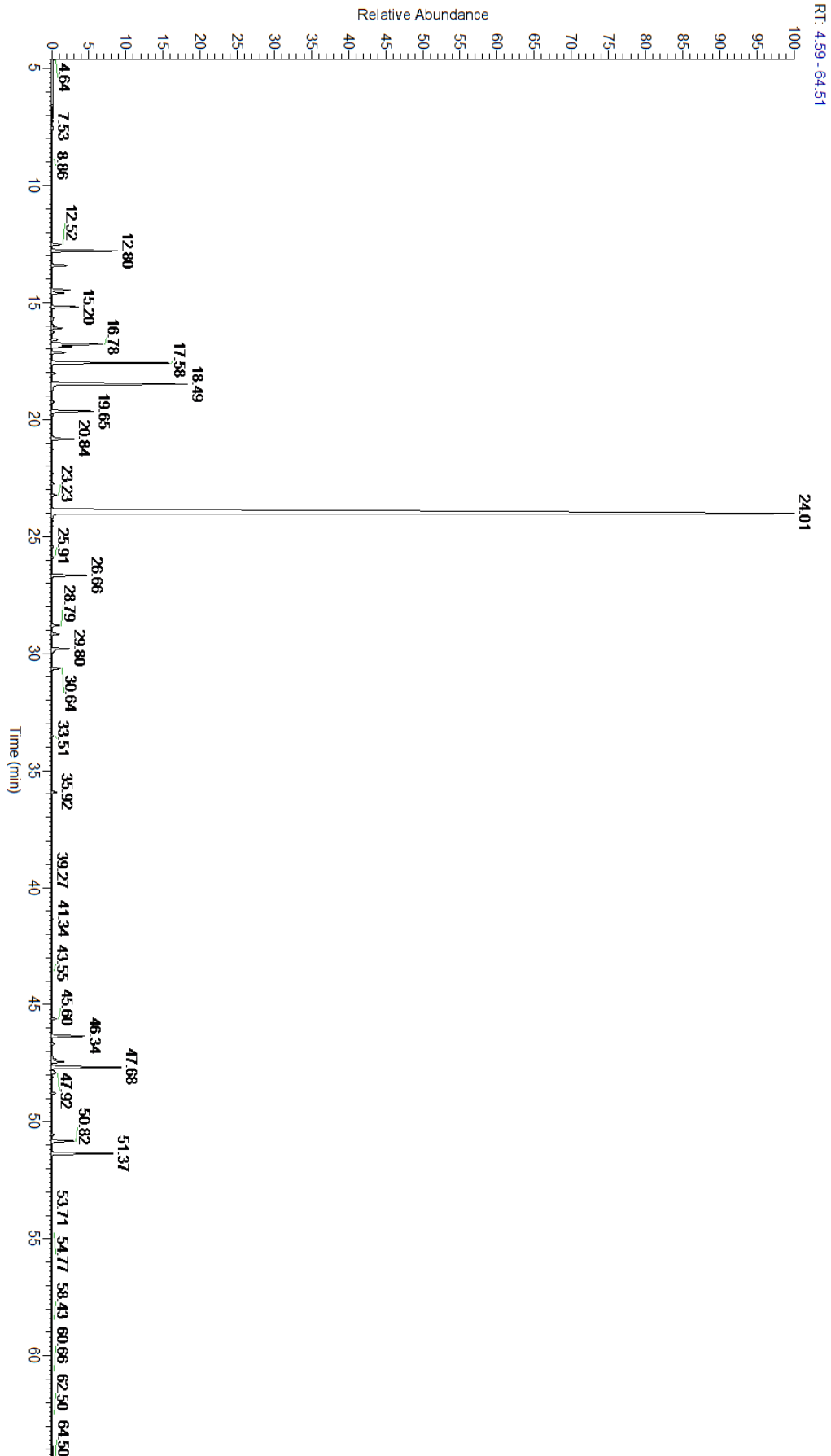
A fresh sample of Frankincense Papyifera (Boswellia papyifera) Essential Oil (10 uL in .5to.5 mL Hexane + ETOH) was prepared and analyzed via split injection GC/EI-MS.

Main Compounds	Percentages
Octyl acetate	60.57%
1-Octanol	6.71%
(E)-beta-Ocimene	4.85%
alpha-Pinene	2.80%
Limonene	2.28%
Linalool	1.82%
Bornyl acetate	1.48%
Cembrene A	1.39%
Myrcene	1.09%
Incensole	1.00%
1,8-Cineole	0.81%
Sabinene	0.74%
Geranyl acetate	0.70%

Monoterpenes	Sesquiterpenes	Monoterpenols	Sesquiterpenols	Ketones
14.41%	0.00%	1.89%	0.00%	0.00%
Esters	Ethers	Aldehydes	Phenols	Other
64.18%	0.81%	0.05%	0.00%	18.66%



- Monoterpenes
- Sesquiterpenes
- Monoterpenols
- Sesquiterpenols
- Ketones
- Esters
- Ethers
- Phenols
- Other



Total Percentage		90.60%			
Peak Number	RT	Area %	Compound Name	RI	Chemical Family
1	12.52	0.34%	alpha-Thujene	927.80	Monoterpene
2	12.80	2.80%	alpha-Pinene	936.10	Monoterpene
3	13.42	0.65%	Camphene	950.30	Monoterpene
4	13.65	0.01%	Thuja-2,4(10)-diene	953.00	Monoterpene
5	14.47	0.74%	Sabinene	973.00	Monoterpene
6	14.60	0.51%	beta-Pinene	974.00	Monoterpene
7	15.20	1.09%	Myrcene	989.20	Monoterpene
8	15.66	0.05%	Octanal	998.00	Aliphatic Aldehyde
9	15.75	0.03%	alpha-Phellandrene	1002.00	Monoterpene
10	15.98	0.06%	delta-3-Carene	1008.00	Monoterpene
11	16.10	0.39%	Hexyl acetate	1009.00	Aliphatic Ester
12	16.27	0.08%	alpha-Terpinene	1014.00	Monoterpene
13	16.59	0.22%	para-Cymene	1024.30	Monoterpene
14	16.78	2.28%	Limonene	1029.50	Monoterpene
15	16.88	0.81%	1,8-Cineole	1031.80	Monoterpene Ether
16	17.14	0.53%	(Z)-beta-Ocimene	1037.80	Monoterpene
17	17.58	4.85%	(E)-beta-Ocimene	1047.70	Monoterpene
18	18.03	0.14%	gamma-Terpinene	1054.00	Monoterpene
19	18.49	6.71%	1-Octanol	1075.14	Aliphatic Alcohol
20	19.25	0.08%	Terpinolene	1092.10	Monoterpene
21	19.65	1.82%	Linalool	1099.00	Monoterpenol
22	22.73	0.07%	Terpinen-4-ol	1180.57	Monoterpenol
23	24.01	60.57%	Octyl acetate	1211.00	Aliphatic Ester
24	26.66	1.48%	Bornyl acetate	1288.29	Monoterpene Ester
25	28.79	0.32%	Citronellyl acetate	1357.83	Monoterpene Ester
26	29.17	0.31%	Neryl acetate	1362.90	Monoterpene Ester
27	29.80	0.70%	Geranyl acetate	1379.20	Monoterpene Ester
28	29.89	0.12%	Hexyl hexanoate	1384.00	Aliphatic Ester
29	30.64	0.29%	Decyl acetate	1410.00	Monoterpene Ester
30	35.92	0.16%	Dodecanoic acid	1568.67	Sesquiterpene Acid
31	46.34	1.39%	Cembrene A	1931.00	Diterpene
32	50.82	1.00%	Incensole	2152.00	Diterpenol