



## *Essential Validation Services*



## Sample:

---

Client: | Floracopeia  
Sample: | Cedarwood Himalayan (Cedrus deodara)  
Batch # | CEDR17121401  
Cas Number | 68991-36-6  
Type: | Essential Oil

---

## Conclusion:

- No adulterants, diluents, or contaminants were detected via this method.
- This oil meets the expected profile for genuine essential oil of Cedarwood Himalayan (Cedrus deodara).



X 

---

Validated By:

Essential Validation Services

747 SW 2nd Ave, Gainesville, FL 32601

Phone: 317-361-5044 E-mail: [Adam@essentialvalidationservices.com](mailto:Adam@essentialvalidationservices.com)

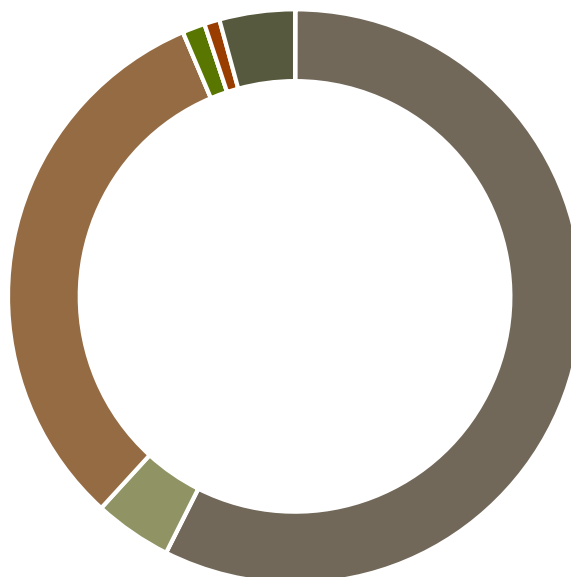
## Summary of Analyses

---

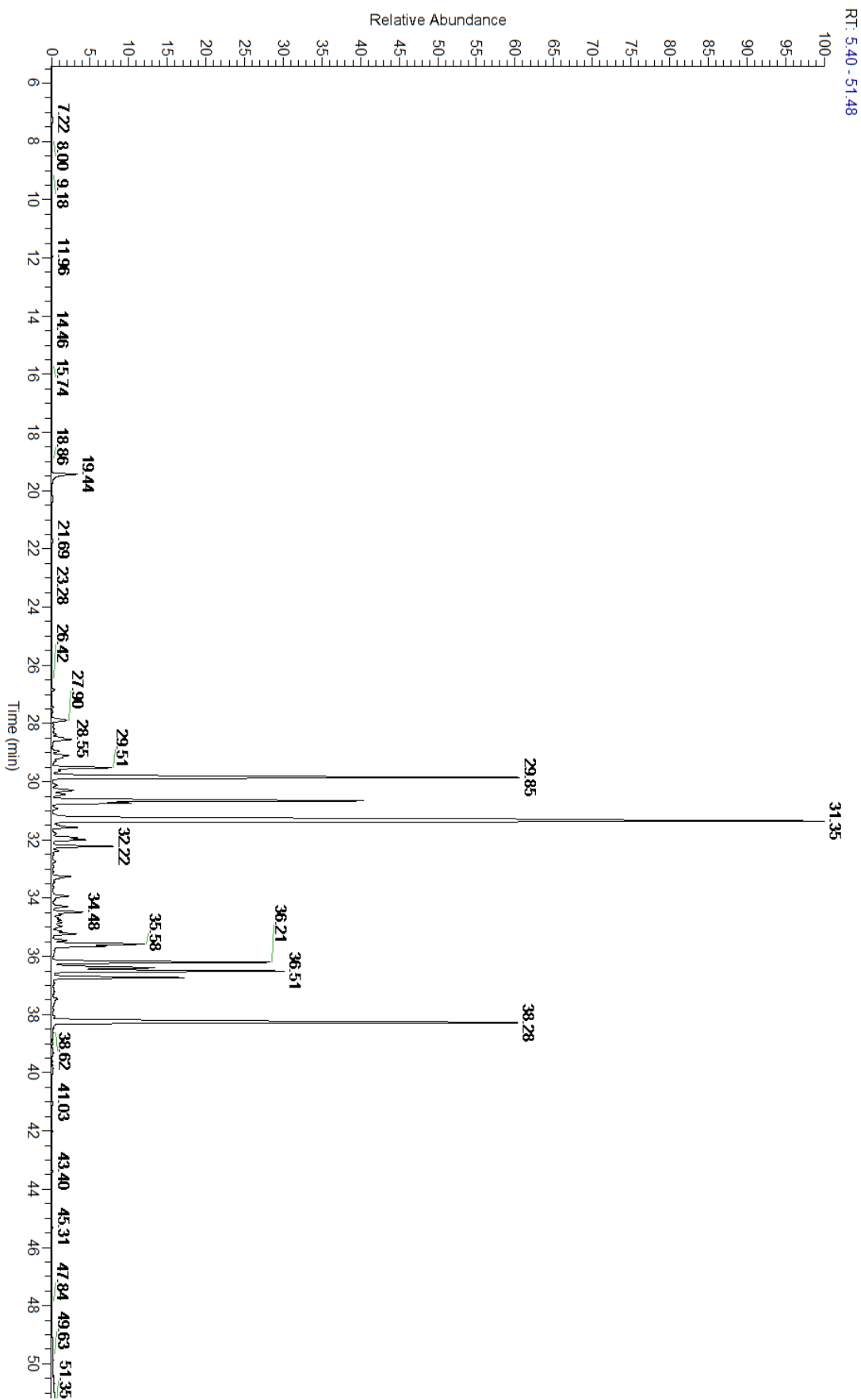
A fresh sample of Cedarwood Himalayan (Cedrus deodara) Essential Oil (10 uL in .5 to .5 mL Hexane + ETOH) was prepared and analyzed via split injection GC/EI-MS.

Main Compounds	Percentages
beta-Himachalene	29.53%
(E)-alpha-Atlantone	14.44%
alpha-Himachalene	12.53%
gamma-Himachalene	7.74%
(E)-gamma-Atlantone	5.33%
(Z)-gamma-Atlantone	4.98%
(Z)-alpha-Atlantone	2.90%
Deodarone	2.76%
Allohimachalol	2.13%
Himachala-2,4-diene	1.47%
Vestitenone	1.40%
trans-alpha-Bisabolene	1.36%
Calamenol	1.07%

Monoterpenes	Sesquiterpenes	Monoterpenols	Sesquiterpenols	Ketones
0.03%	57.39%	0.00%	4.38%	31.81%
Esters	Ethers	Aldehydes	Phenols	Other
0.00%	1.28%	0.00%	0.86%	4.25%



- Monoterpenes
- Sesquiterpenes
- Monoterpenols
- Sesquiterpenols
- Ketones
- Esters
- Ethers
- Phenols
- Other





Total Percentage		95.75%			
Peak Number	RT	Area %	Compound Name	RI	Chemical Family
1	11.96	0.02%	alpha-Pinene	936.10	Monoterpene
2	15.74	0.01%	Limonene	1029.50	Monoterpene
3	18.05	0.01%	para-Cymenene	1092.43	Monoterpene
4	19.44	0.81%	Limona ketone	1134.50	Simple Phenolic
5	21.69	0.05%	para-Methylacetophenone	1186.50	Simple Phenolic
6	26.84	0.07%	alpha-Longipinene	1357.90	Sesquiterpene
7	27.44	0.03%	alpha-Ylangene	1371.33	Sesquiterpene
8	27.90	0.49%	beta-Elemene	1389.20	Sesquiterpene
9	28.38	0.11%	Sibirene	1401.20	Sesquiterpene
10	28.55	0.69%	Longifolene	1403.83	Sesquiterpene
11	28.66	0.02%	alpha-Cedrene	1410.75	Sesquiterpene
12	28.95	0.16%	Dictamnol		
13	29.10	0.46%	UK Cedar		
14	29.18	0.22%	UK Cedar		
15	29.28	0.10%	trans-alpha-Bergamotene	1435.00	Sesquiterpene
16	29.51	1.40%	Vestitenone	1457.50	Terpenic Ketone
17	29.63	0.21%	UK Cedar		
18	29.85	12.53%	alpha-Himachalene	1448.40	Sesquiterpene
19	30.29	0.60%	Thujopsadiene	1465.10	Sesquiterpene
20	30.44	0.34%	Himachala-2,4-diene	1476.80	Sesquiterpene
21	30.65	7.74%	gamma-Himachalene	1476.50	Sesquiterpene
22	30.73	1.47%	Himachala-2,4-diene	1476.80	Sesquiterpene
23	31.35	29.53%	beta-Himachalene	1497.75	Sesquiterpene
24	31.57	0.68%	alpha-Dehydro-ar-himachalene	1516.00	Sesquiterpene
25	31.78	0.11%	delta-Cadinene	1524.14	Sesquiterpene
26	31.92	0.60%	gamma-Vetivenene	1532.00	Sesquiterpene
27	31.99	0.77%	gamma-Dehydro-ar-himachalene	1529.75	Sesquiterpene
28	32.22	1.36%	trans-alpha-Bisabolene	1537.33	Sesquiterpene
29	32.37	0.15%	alpha-Calacorene	1537.14	Sesquiterpene
30	33.26	0.55%	Himachalene oxide	1578.00	Sesquiterpene Ether
31	33.93	0.47%	Longiborneol	1586.50	Sesquiterpenol
32	34.48	0.73%	beta-Himachalene oxide	1595.95	Sesquiterpene Ether
33	35.23	0.56%	Himachalol	1648.50	Sesquiterpenol
34	35.45	0.31%	UK Cedar		
35	35.58	2.13%	Allohimachalol	1660.00	Sesquiterpenol
36	35.65	1.07%	Calamenol	1660.25	Sesquiterpenol
37	36.21	4.98%	(Z)-gamma-Atlantone	1683.00	Sesquiterpene Ketone
38	36.39	2.76%	Deodarone	1693.50	Sesquiterpene Ketone
39	36.51	5.33%	(E)-gamma-Atlantone	1697.00	Sesquiterpene Ketone
40	36.73	2.90%	(Z)-alpha-Atlantone	1707.50	Sesquiterpene Ketone
41	37.46	0.15%	Khusimol	1735.00	Sesquiterpenol
42	38.28	14.44%	(E)-alpha-Atlantone	1773.10	Sesquiterpene Ketone