



Essential Validation Services



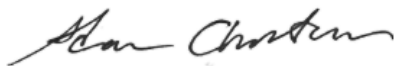
Sample:

Client: | Floracopeia
Sample: | Clary Sage (Salvia sclarea)
Batch # | CLSA17121301
Cas Number | 8016-63-5
Type: | Essential Oil

Conclusion:

- No adulterants, diluents, or contaminants were detected via this method.
- This oil meets the expected profile for genuine essential oil of Clary Sage (Salvia sclarea).

X



Validated By:



Essential Validation Services

747 SW 2nd Ave, Gainesville, FL 32601

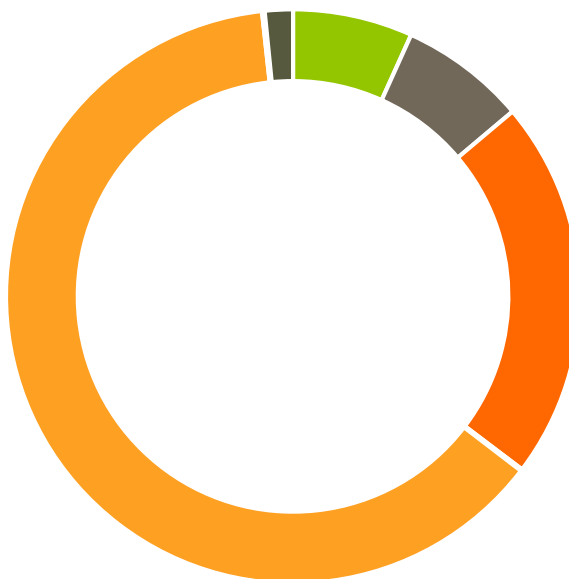
Phone: 317-361-5044 E-mail: Adam@essentialvalidationservices.com

Summary of Analyses

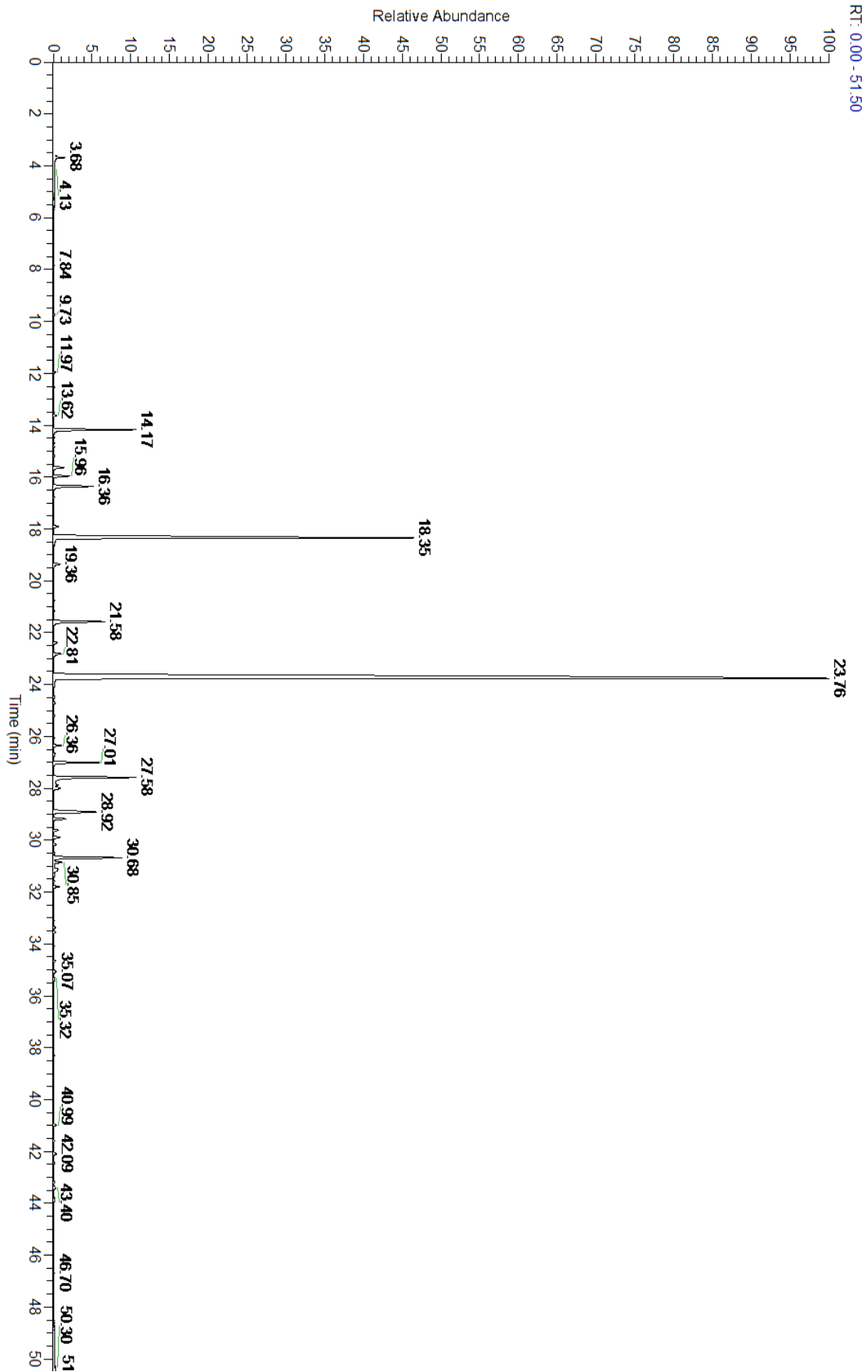
A fresh sample of Clary Sage (Salvia sclarea) Essential Oil (10 uL in .5to.5 mL Hexane + ETOH) was prepared and analyzed via split injection GC/EI-MS.

Main Compounds	Percentages
Linalyl acetate	57.53%
Linalool	18.86%
Geranyl acetate	3.56%
Myrcene	2.95%
Germacrene D	2.64%
alpha-Terpineol	2.18%
beta-Caryophyllene	2.17%
Neryl acetate	1.67%
(E)-beta-Ocimene	1.58%
(Z)-beta-Ocimene	0.57%

Monoterpenes	Sesquiterpenes	Monoterpenols	Sesquiterpenols	Ketones
6.75%	7.11%	21.44%	0.10%	0.00%
Esters	Ethers	Aldehydes	Phenols	Other
62.87%	0.14%	0.01%	0.00%	1.58%



- Monoterpenes ■ Sesquiterpenes ■ Monoterpenols
- Sesquiterpenols ■ Ketones ■ Esters
- Ethers ■ Phenols ■ Other



Total Percentage		98.48%			
Peak Number	RT	Area %	Compound Name	RI	Chemical Family
1	9.20	0.01%	(E)-2-Hexenal	846.00	Aliphatic Aldehyde
2	9.73	0.04%	1-Hexanol	863.00	Aliphatic Alcohol
3	11.97	0.07%	alpha-Pinene	936.10	Monoterpene
4	12.53	0.02%	Camphene	950.30	Monoterpene
5	13.51	0.02%	Sabinene	973.00	Monoterpene
6	13.62	0.11%	beta-Pinene	974.00	Monoterpene
7	13.87	0.01%	1-Octen-3-ol	980.00	Aliphatic Alcohol
8	14.17	2.95%	Myrcene	989.20	Monoterpene
9	14.70	0.02%	alpha-Phellandrene	1002.00	Monoterpene
10	15.17	0.03%	alpha-Terpinene	1014.00	Monoterpene
11	15.48	0.01%	para-Cymene	1024.30	Monoterpene
12	15.63	0.43%	Limonene	1029.50	Monoterpene
13	15.63	Co-Eluting	beta-Phellandrene	1030.00	Monoterpene
14	15.96	0.57%	(Z)-beta-Ocimene	1037.80	Monoterpene
15	16.36	1.58%	(E)-beta-Ocimene	1047.70	Monoterpene
16	16.79	0.04%	gamma-Terpinene	1054.00	Monoterpene
17	17.91	0.21%	Terpinolene	1092.10	Monoterpene
18	18.35	18.86%	Linalool	1099.00	Monoterpenol
19	19.36	0.32%	Alloocimene	1129.90	Monoterpene
20	20.76	0.03%	Borneol	1168.71	Monoterpenol
21	21.16	0.02%	Terpinen-4-ol	1180.57	Monoterpenol
22	21.58	2.18%	alpha-Terpineol	1191.71	Monoterpenol
23	22.39	0.16%	Linalool formate		
24	22.81	0.35%	Nerol	1230.67	Monoterpenol
25	23.76	57.53%	Linalyl acetate	1263.80	Monoterpene Ester
26	24.72	0.06%	Bornyl acetate	1288.29	Monoterpene Ester
27	25.03	0.01%	Tridecane	1300.05	Alkane
28	25.19	0.05%	Geranyl formate	1304.35	Monoterpene Ester
29	26.36	0.30%	delta-Elemene	1335.83	Sesquiterpene
30	26.67	0.05%	alpha-Terpinyl acetate	1353.00	Monoterpene Ether
31	26.74	0.04%	alpha-Cubebene	1355.71	Sesquiterpene
32	27.01	1.67%	Neryl acetate	1362.90	Monoterpene Ester
33	27.58	3.56%	Geranyl acetate	1378.50	Monoterpene Ester
34	27.87	0.19%	beta-Bourbonene	1388.70	Sesquiterpene
35	27.99	0.36%	beta-Elemene	1389.20	Sesquiterpene
36	28.92	2.17%	beta-Caryophyllene	1427.14	Sesquiterpene
37	29.18	0.48%	beta-Copaene	1445.00	Sesquiterpene
38	29.89	0.26%	alpha-Humulene	1461.43	Sesquiterpene
39	30.16	0.10%	allo-Aromadendrene	1471.00	Sesquiterpene
40	30.68	2.64%	Germacrene D	1484.71	Sesquiterpene
41	30.85	0.37%	1-epi-Bicyclosesquiphellandrene	1489.25	Monoterpene
42	31.12	0.22%	alpha-Muurolene	1500.25	Sesquiterpene
43	31.18	0.13%	(E,E)-alpha-Farnesene	1508.14	Sesquiterpene

44	31.80	0.22%	delta-Cadinene	1524.14	Sesquiterpene
45	33.37	0.06%	Spathulenol	1587.00	Sesquiterpenol
46	33.53	0.09%	Caryophyllene oxide	1594.86	Sesquiterpene Ether
47	35.32	0.04%	beta-Eudesmol	1647.86	Sesquiterpenol

- This report is the digitally signed and will only be considered valid if the signature is intact.
- This report may not be published without the consent of Essential Validation Services.
- Chromatograph image may not show full run time