



Essential Validation Services



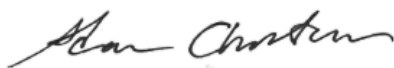
Sample:

Client: | Floracopeia
Sample: | Eucalyptus Radiata (Eucalyptus radiata)
Batch # | EUR17121801
CAS Number | 92201-64-4
Type: | Essential Oil

Conclusion:

- No adulterants, diluents, or contaminants were detected via this method.
- This oil meets the expected profile for genuine essential oil of Eucalyptus Radiata (Eucalyptus radiata).

X



Validated By:



Essential Validation Services

747 SW 2nd Ave, Gainesville, FL 32601

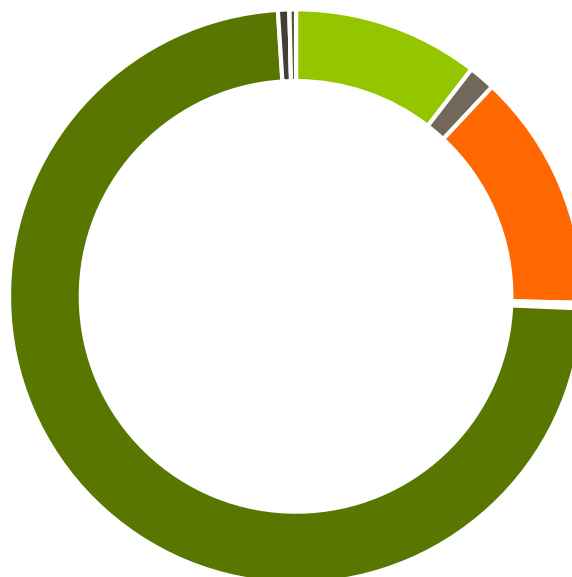
Phone: 317-361-5044 E-mail: Adam@essentialvalidationservices.com

Summary of Analyses

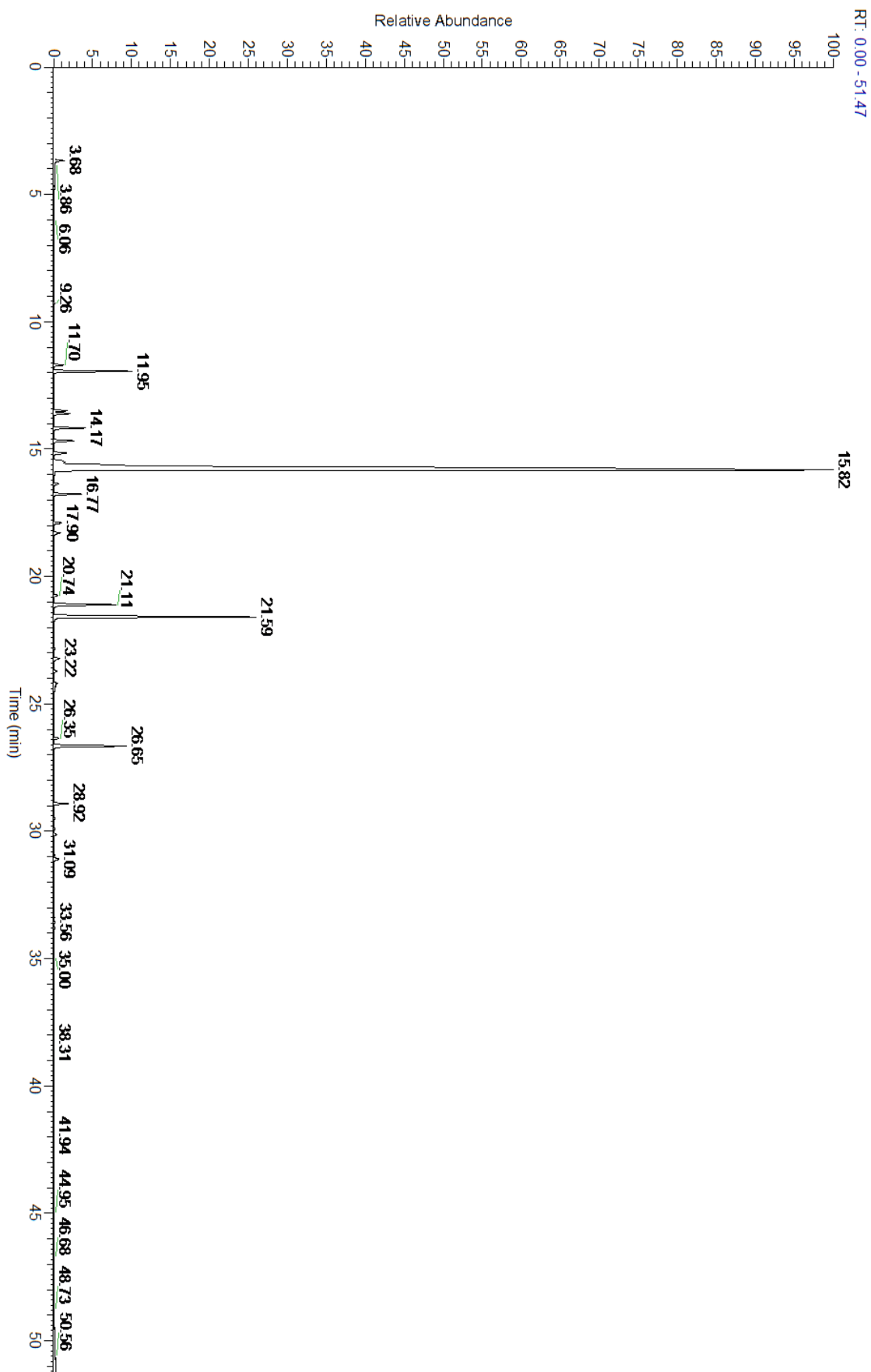
A fresh sample Eucalyptus Radiata (Eucalyptus radiata) Essential Oil (10 uL in .5to.5 mL Hexane + ETOH) was prepared and analyzed via split injection GC/EI-MS.

Main Compounds	Percentages
1,8-Cineole	70.12%
alpha-Terpineol	9.96%
alpha-Pinene	3.26%
alpha-Terpinyl acetate	3.20%
Terpinen-4-ol	2.82%
Myrcene	1.31%
gamma-Terpinene	1.17%
alpha-Phellandrene	0.91%
para-Cymene	0.82%
beta-Pinene	0.72%
alpha-Terpinene	0.63%
beta-Caryophyllene	0.61%
Sabinene	0.53%

Monoterpenes	Sesquiterpenes	Monoterpenols	Sesquiterpenols	Ketones
10.47%	1.50%	13.39%	0.17%	0.14%
Esters	Ethers	Aldehydes	Phenols	Other
0.00%	73.32%	0.64%	0.00%	0.37%



- Monoterpenes ■ Sesquiterpenes ■ Monoterpenols
- Sesquiterpenols ■ Ketones ■ Esters
- Ethers ■ Phenols ■ Other



Total Percentage		99.66%			
Peak Number	RT	Area %	Compound Name	RI	Chemical Family
1	9.26	0.03%	(Z)-3-Hexenol	850.00	Aliphatic Alcohol
2	11.70	0.40%	alpha-Thujene	927.80	Monoterpene
3	11.95	3.26%	alpha-Pinene	936.10	Monoterpene
4	12.52	0.02%	Camphene	950.30	Monoterpene
5	13.49	0.53%	Sabinene	973.00	Monoterpene
6	13.60	0.72%	beta-Pinene	974.00	Monoterpene
7	14.17	1.31%	Myrcene	989.20	Monoterpene
8	14.68	0.91%	alpha-Phellandrene	1002.00	Monoterpene
9	15.15	0.63%	alpha-Terpinene	1014.00	Monoterpene
10	15.51	0.82%	para-Cymene	1024.30	Monoterpene
11	15.82	70.12%	1,8-Cineole	1031.80	Monoterpene Ether
12	15.82	Co-Eluting	Limonene	1029.50	Monoterpene
13	15.98	0.03%	(Z)-beta-Ocimene	1037.80	Monoterpene
14	16.36	0.25%	(E)-beta-Ocimene	1047.70	Monoterpene
15	16.77	1.17%	gamma-Terpinene	1054.00	Monoterpene
16	17.35	0.01%	cis-Linalool oxide (5) (furanoid)	1075.10	Monoterpenol
17	17.90	0.39%	Terpinolene	1092.10	Monoterpene
18	18.02	0.03%	para-Cymenene	1092.43	Monoterpene
19	18.28	0.34%	Linalool	1099.00	Monoterpenol
20	19.16	0.02%	cis-para-Menth-2-en-1-ol	1118.25	Monoterpenol
21	20.21	0.01%	Isopulegol	1151.25	Monoterpenol
22	20.74	0.18%	delta-Terpineol	1166.00	Monoterpenol
23	21.11	2.82%	Terpinen-4-ol	1180.57	Monoterpenol
24	21.59	9.96%	alpha-Terpineol	1191.71	Monoterpenol
25	22.84	0.05%	Citronellol	1229.25	Monoterpenol
26	23.22	0.35%	Neral	1246.57	Monoterpene Aldehyde
27	23.71	0.14%	Piperitone	1258.50	Monoterpene Ketone
28	24.20	0.29%	Geranial	1272.00	Monoterpene Aldehyde
29	26.35	0.23%	delta-Elemene	1335.83	Sesquiterpene
30	26.65	3.20%	alpha-Terpinyl acetate	1353.00	Monoterpene Ether
31	28.03	0.02%	beta-Elemene	1389.20	Sesquiterpene
32	28.92	0.61%	beta-Caryophyllene	1427.14	Sesquiterpene
33	29.50	0.05%	Aromadendrene	1449.80	Sesquiterpene
34	29.91	0.06%	alpha-Humulene	1461.43	Sesquiterpene
35	30.12	0.13%	allo-Aromadendrene	1471.00	Sesquiterpene
36	30.92	0.04%	Bicyclogermacrene	1490.71	Sesquiterpene
37	31.09	0.34%	Viridiflorene	1494.14	Sesquiterpene
38	31.45	0.01%	gamma-Cadinene	1515.29	Sesquiterpene
39	31.81	0.01%	delta-Cadinene	1524.14	Sesquiterpene
40	33.39	0.03%	Spathulenol	1587.00	Sesquiterpenol
41	33.56	0.08%	Globulol	1593.50	Sesquiterpenol
42	33.80	0.06%	Viridiflorol	1596.00	Sesquiterpenol